

## Promotions

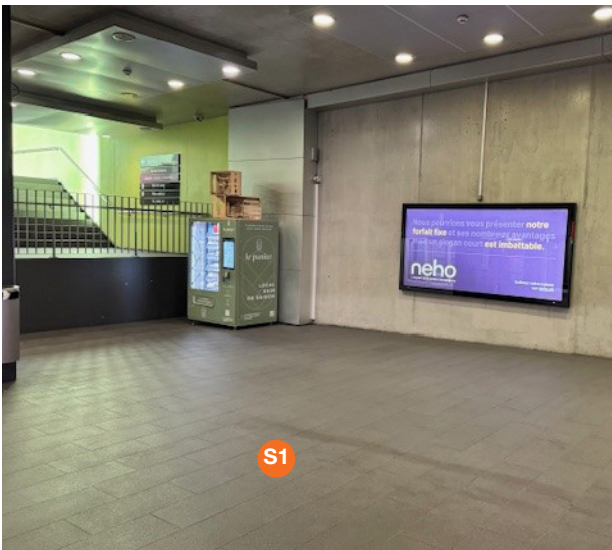
# Specifications Métro m2 Lausanne-Croisettes



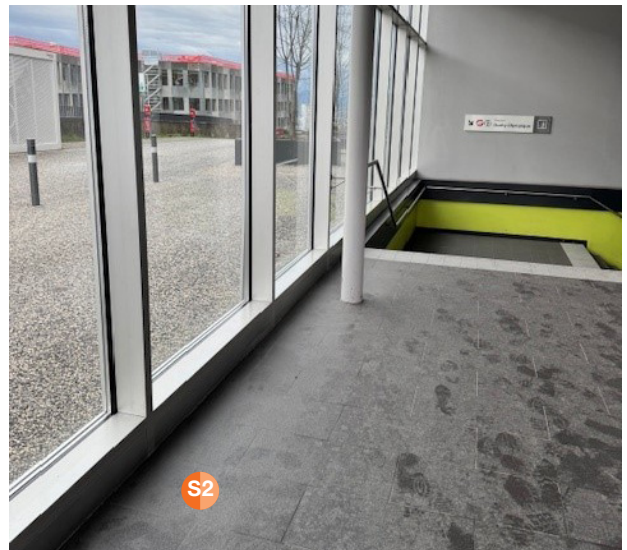
# Métro m2 Lausanne

Site plan sampling points all stations





**S1** Sampling point, Lausanne-Croisettes station, in front of the stairs.



**S2** 1<sup>st</sup> half sampling point, Lausanne-Croisettes station,



**S2** 2<sup>nd</sup> half sampling point, Lausanne-Croisettes station,

## Services

Opening hours	The metro stations will be closed between 0.30 and 5.00 am. Access to the station from 5.00 a.m.
Delivery	Delivery can be made in front of the Croisettes station. See more details in the “Logistical information” section.
Temporary storage facility	This area is on the same level as the S1 distribution area. Warning: no lockable room. Not supervised. See “Logistical information”. For the temporary storage, cartons must be labeled to clearly distinguish that they are promotional material and not waste or other material. Intermediate storage areas must be vacated as soon as the promotion is over.
Parking	Not available.
Access to WC facilities	Toilets are available at some stations and are marked with an «ISS» sticker. Key by arrangement.
Wifi	Not available.

### Important sampling information

- No objects may be placed within 60 cm of guidance systems for visually impaired persons.
- Underpasses and lower levels are subject to a maximum headroom of 2.00 m for branded sampling containers. Any damage to sprinkler system will have serious consequences, which will be charged to the agency or the customer.
- Each sampling point is limited to a maximum of 4 promoters, each with one wheeled container for the goods to be distributed.
- With the splitted sampling point “S2” you benefit from a larger distribution radius and thus from more customer contacts. The maximum number of 4 promoters remains, i.e. a maximum of two per half sampling point.
- The wheeled containers may be brand-labelled (incl. beach flags etc.).

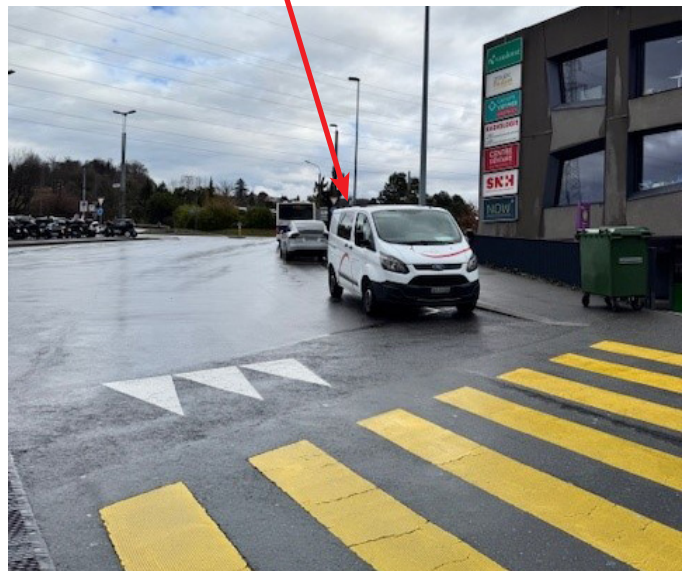
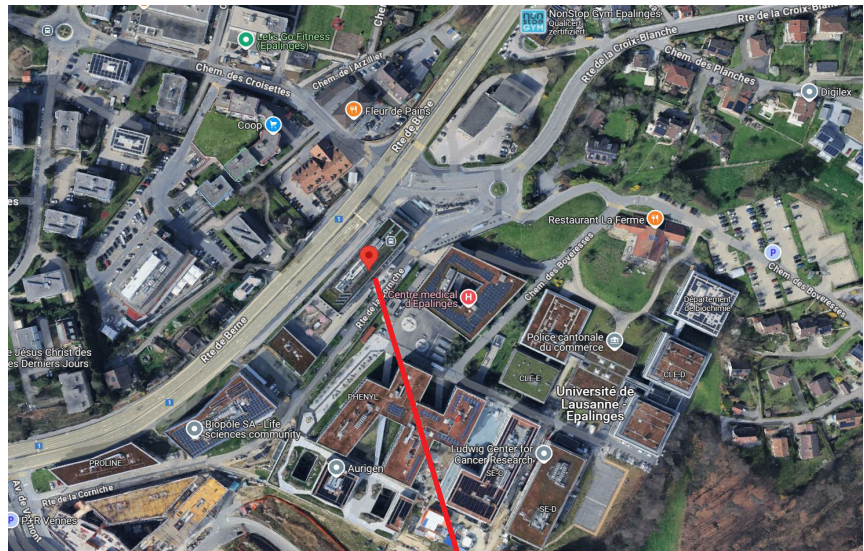
### Registration for a sampling campaign must be made at least 7 days before the campaign.

With the authorization you will receive the coordinates of the direct contact of TL concerning all logistics on site.

## Logistical information station Lausanne-Croisettes

### Delivery

Via Route de la Corniche 2,  
1066 Epalinge



### Interim storage

There is no locked storage area, but an intermediate storage area at the same level as the distribution point «S1». Equipment can be stored between the emergency doors along the glass.

